

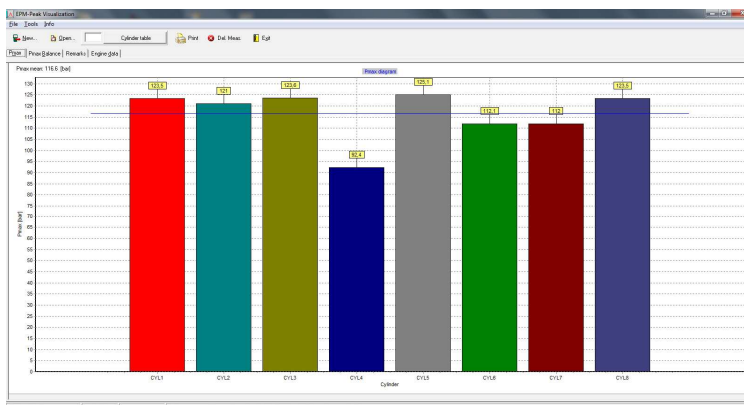
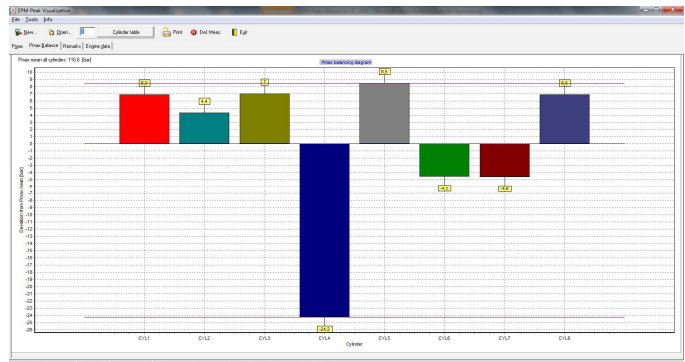
# Peak Pressure Indicator EPM-Peak

for 4-stroke Diesel Engine application

- High accuracy
- Battery charging from PC via USB port
- Excellent price performance ratio
- 200 measurements storing capacity
- incl. Visualisation software

### Application:

- 4 stroke Diesel engines: 200– 1500 RPM





EPM-Peak is a lightweight, battery powered hand held portable device, designed to measure the maximum value of cylinder pressure on 4-stroke diesel engines.

The cylinder pressure will be measured with the EMP-Peak unit including our high temperature cylinder pressure sensor CPS with Thompson adaptor at indicator cock on 4-stroke marine diesel engines.

The EPM-Peak collects 10 consecutive pressure measurements (cycles) and calculates peak pressure and engine speed. The measured data are displayed in numerical format on the LCD screen and stored in memory.

In comparison to conventional mechanical peak pressure meter the EPM-Peak offers an easy handling, the measurements have a higher accuracy, the data Pmax and speed will be displayed exactly on the LCD screen and up to 200 measurements can be stored. I

## Technical-data

Measuring range	0...300 bar
Accuracy (EPM-Peak unit incl. CPS sensor)	+/- 1 % full scale
Max. temperature at measuring cell	300 °C
Storing capacity	200 measurements
Interface	USB
Battery	2* E-Block re-chargeable NiMh
Weight incl. sensor and adaptor	1100 g
Dimension incl. protection cover	210 x 100 x 80 mm

### Scope of supply

- EPM-Peak incl. instrument case
- EPM-Peak unit incl. protection cover
- CPS cylinder pressure sensor(1m length)
- Battery 2 x E-Block NiMh re-chargeable
- USB connecting cable
- Thompson adaptor(W27x1/10") incl. mounting tool

### Part no.

IW-1540

### Option

Visualisation software for Pmax—and Pmax balance diagram IW-1541