

## Electronic Pressure Indicator EPM-XP

for Diesel Engine application

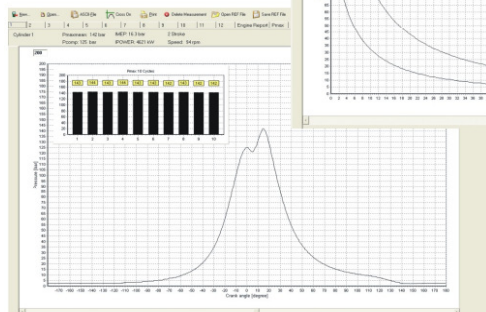
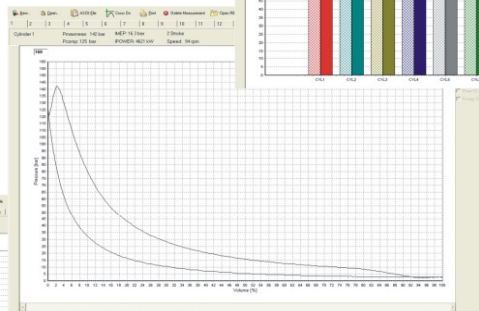
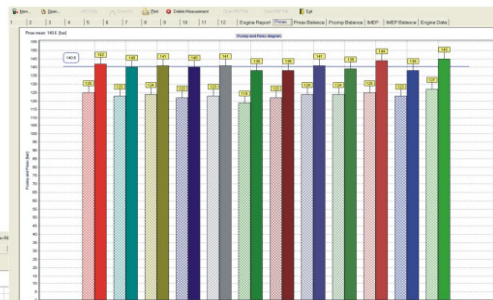
- High accuracy
- Battery charging from PC via USB port
- Excellent price performance ratio
- Automatic Pcomp calculation
- IPOWER and IMEP calculation
- Trend-function
- Calc. of spec. F.O. consumption (g/kwh)

More than  
1,500  
units sold



Application:

- 2 stroke engines: 40– 300 RPM
- 4 stroke engines: 200– 1500 RPM



EPM-XP will be supplied on Kawasaki Heavy Industries built MAN B&W two stroke engine (01/2010).  
Hyundai Heavy Industries adopt EPI (Elektronik Pressure Indicator) as standard application for all newly coming MAN B&W MC/MC-C and Wärtsilä RTA/RT flex engines (04/2011)



The user friendly EPM-XP is a powerful electronic indication device. It serves to analyse 2- and 4-stroke large diesel engines in connection with HTT cylinder pressure sensor.

The EPM-XP contains the basic components, handheld data acquisition unit calibrated together with HTT cylinder pressure sensor as well as data acquisition and analysing software. Commercially re-chargeable batteries are used.

All the measured data can be downloaded via USB port to a PC where the EPM-XP visualisation software is installed.

## Technical-data Electronic Indicator EPM-XP

Measuring range	0...300 bar
Accuracy (EPM-XP unit incl. HTT sensor)	+/- 0,5 % full scale
Max. temperature at measuring cell	300 °C
Storing capacity	20 measurements / engine
Interface	USB
Battery	E-Block re-chargeable NiMh 270 mA
Weight incl. sensor and adaptor	1100 g
Dimension incl. protection cover	210 x 100 x 80 mm

### Scope of supply

### Part no.

EPM-XP incl. instrument case	IW-1520
- EPM-XP unit incl. protection cover	
- HTT cylinder pressure sensor(1m length)	
- Battery 2 x E-Block NiMh re-chargeable	
- Visualisation software	
- USB connecting cable	
- Thompson adaptor(W27x1/10") incl. mounting tool	
- Instrument case	

### Option :

- IMES Dongle for IPOWER- and IMEP calculation, incl. p/v diagram, Pcomp diagram, IMEP diagram and IMEP balance diagram, incl. trending	IW-1558
- Pressue pump coupling for thompson adaptor	IW-1574
- Thread cleaner for thompson thread	IW-1571